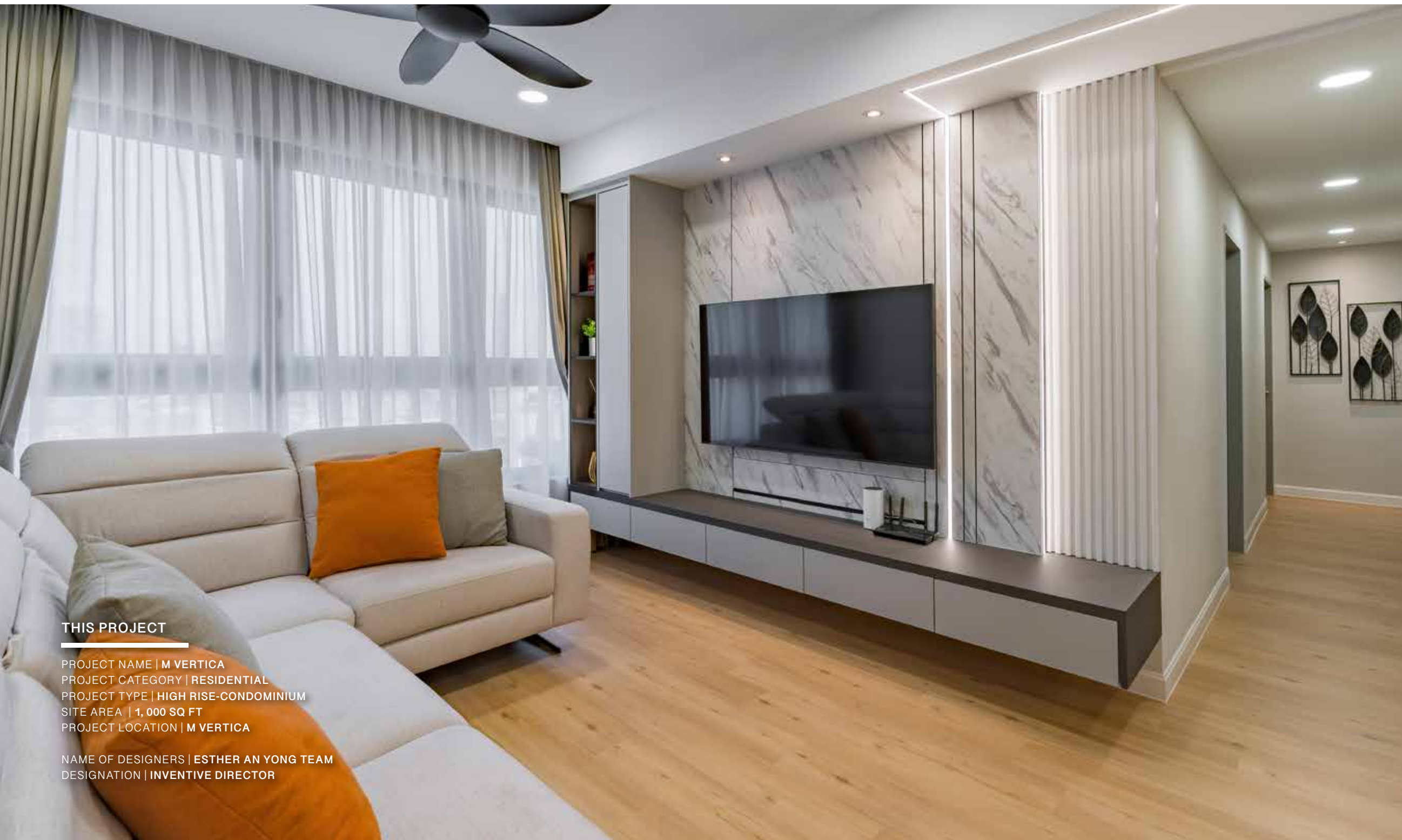


# BEYOND THE EMPHEMERAL

Minimalism is where clean lines, functionality, and simplicity reign supreme. With its thoughtful blend of textures, colours and space-maximising features, it offers a refreshing oasis in the heart of the city. With M Vertica, Young Concept Design has succeeded in their mission of creating a comforting and inviting home that transcends trends and stands as a timeless example of elegant living.



## THIS PROJECT

PROJECT NAME | M VERTICA  
 PROJECT CATEGORY | RESIDENTIAL  
 PROJECT TYPE | HIGH RISE-CONDOMINIUM  
 SITE AREA | 1,000 SQ FT  
 PROJECT LOCATION | M VERTICA

NAME OF DESIGNERS | ESTHER AN YONG TEAM  
 DESIGNATION | INVENTIVE DIRECTOR

In a world where the pace of life seems to quicken with each passing day, the art of simplicity becomes a sanctuary. M Vertica, a testament to contemporary interior design, has mastered the art of tranquil living. With its roots firmly planted in the Minimalist movement, this living space is a testament to the beauty of clean lines, functionality, and pure simplicity.

At the heart of M Vertica's design is the exquisite continuous line that seamlessly connects the TV cabinet to the dining area. This design marvel effortlessly blends grey built-in cabinetry with white wood strip panels. The TV cabinet's rear is adorned with the timeless elegance of marble texture finishes, adding a tactile dimension to the space. Throughout the home, a harmonious palette of white and oak strip flooring creates an inviting canvas. Subtle pops of colour, including shades of orange, pink, and green, are artfully interspersed, adding character and vibrancy to the serene backdrop.

One of the most remarkable transformations at M Vertica is the expanded kitchen space. The extended area provides ample room for culinary creativity. Glass backsplashes serve as a glossy counterpoint to the matte surfaces of the countertops and built-in wall cabinets. At the kitchen's shorter end, tucked into a discreet niche, you'll find the refrigerator and washer-dryer, cleverly integrated to optimize space.

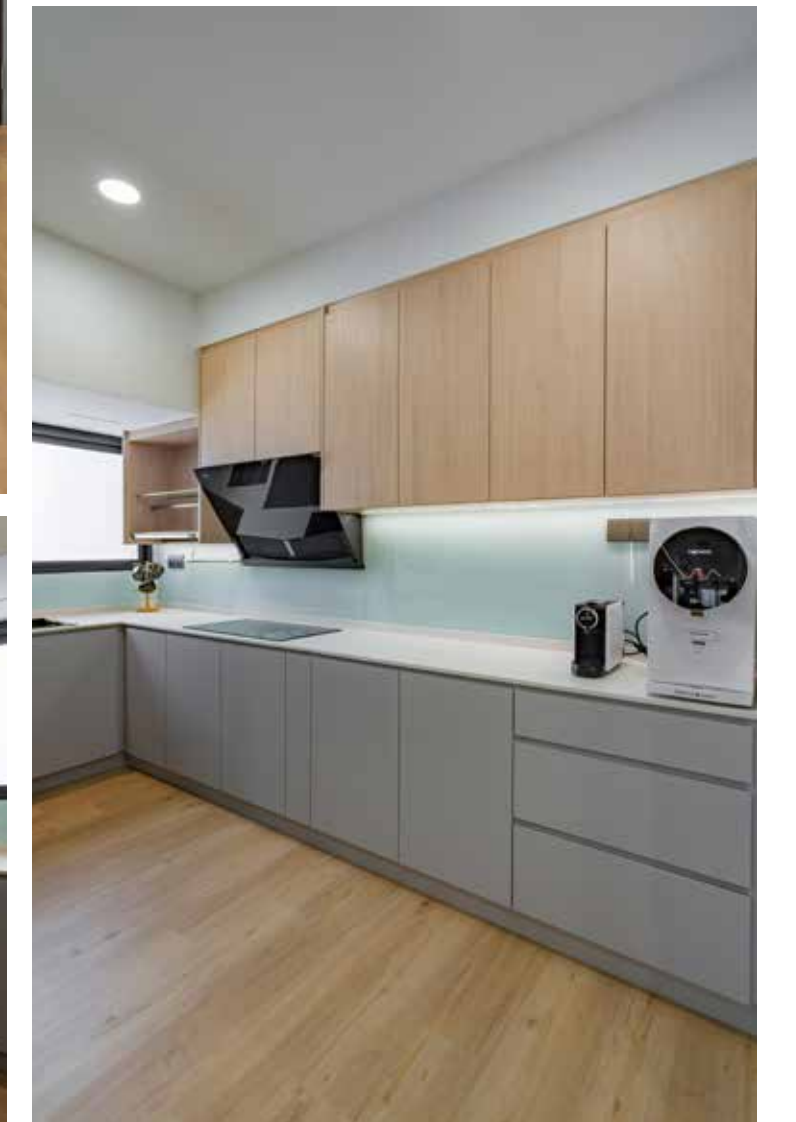




The second and third bedrooms exemplify the art of maximizing space. Each room features fully built-in designs that combine white, birch wood, and grey-green hues. These elements, artfully illuminated by concealed warm lighting, create a crisply defined ambiance that invites relaxation. The master bedroom on the other hand boasts an added space and indulges in the luxury of that privilege. Upholstered headboard panelling lends a touch of opulence, while a harmonious mix of glass and matte wardrobe doors adds depth and sophistication to the space.

Embracing a converted design trend, the bathrooms at M Vertica uses large existing tiles that are both visually appealing and easy to maintain. This design choice not only simplifies cleaning but also creates an illusion of spaciousness by minimising visual interruptions. Additionally, a full-length cabinet and mirror provide generous storage while concealing soft, ambient lighting that bathes the space in a gentle glow.

Stepping out into the foyer, you're greeted by a contemporary grill design that peeks into built-in shoe cabinets. This blend of functionality and aesthetics sets the tone for the rest of the home. Thus concludes M Vertica's interior design philosophy that resonates with Young Concept Design's core principle: "Design a Comfortable Home." This home is not just a showcase of elegant aesthetics but a haven for comfortable living. Every element, from the minimalist lines to the carefully chosen colour palette, has been thoughtfully curated to offer a serene retreat in the midst of urban hustle and bustle. ©







**YOUNG CONCEPT DESIGN SDN BHD** (1124625-W)

A-13A-17, Prima Avenue, Menara A, Jalan PJU 1/39, Dataran Prima, 47301 Petaling Jaya, Selangor Malaysia.

**T** 016 974 5684 **E** info@youngconceptdesign.com

**FB** YoungConceptDesign **WEB** www.youngconceptdesign.com